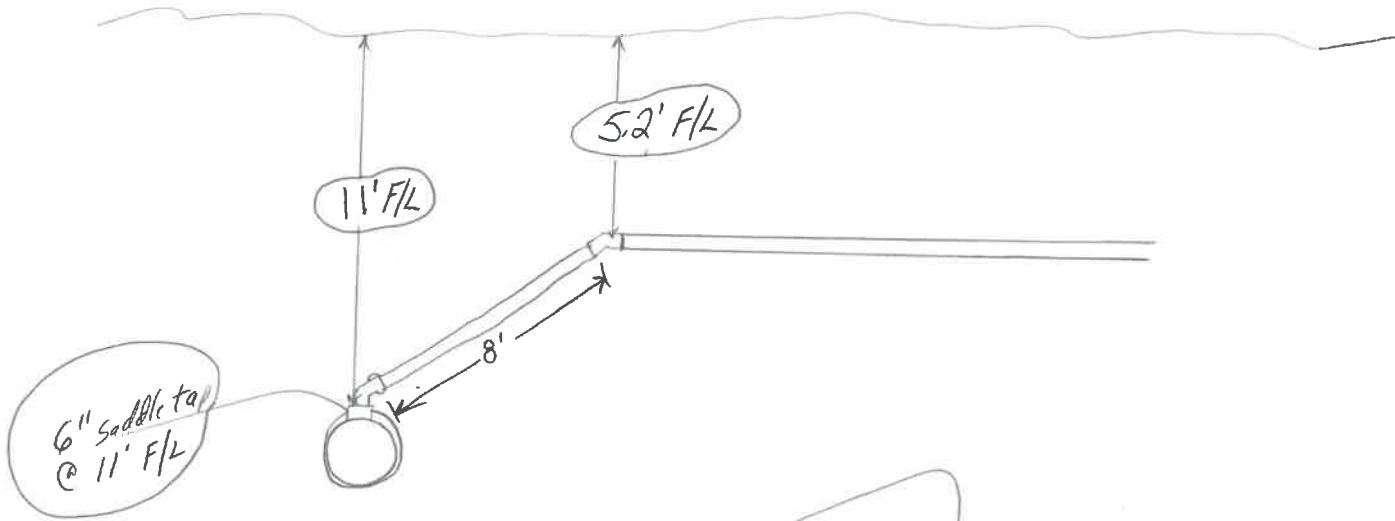


6-28-95
Bob Cordes



6" saddle tap
@ 11' F/L

5.2' F/L

11' F/L

8'

concrete main
in excellent condition
at this point

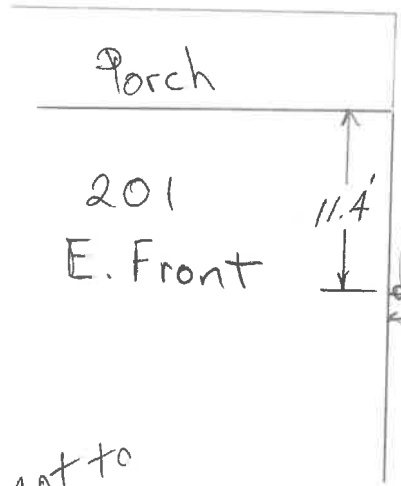
UP
m/s

88'

15" concrete main
C/L E. Front @ 12.4' F/L



Walk



Porch

201
E. Front

11.4'

11.4'

11.4'

4.5'

22'

Not to
Scale